

WORKBENCHES

Tecnolab



# WORKBENCHES

Thanks to its experience, TecnoLab offers a new line of innovative design workbenches. The sturdy structure is entirely made of bent sheet metal.

Every single element has been studied to ensure the table to support adequate loads.

The worktop can be supplied in 30 mm chipboard covered with anti-reflective melamine-laminate with high strength on both sides.

There is also an ESD version with static dissipative laminate, 10M ohms resistivity. In both cases the edge of the worktop is covered with a flat black PVC profile.



## ELECTRIFICATION & LIGHTING

The electrification of TecnoLab tables can be provided by the establishment on the front part (max. 3 positions) or by an electrified bar in the front of the worktop.

All tables are equipped with an electrified cabinet complete with breaker 10A placed in the back side.

In the ESD version, the table is equipped with two sockets to connect antistatic wristband in the front part of the worktop.

For the lighting, you can choose between the classic ceiling PVC or professional ones in extruded aluminum.

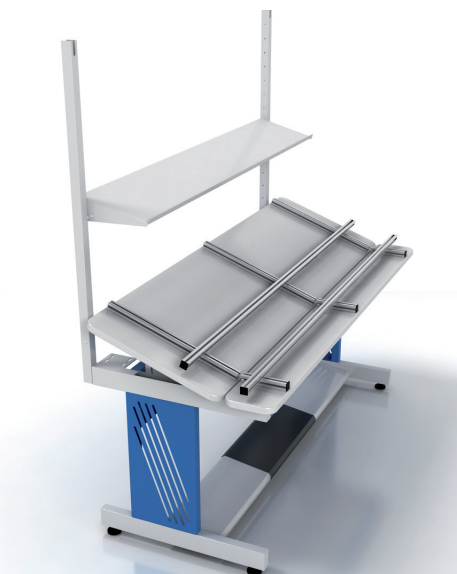


## MODULARITY

In a dynamic manufacturing environment what can go well today, tomorrow it will need to be adjusted.

For this reason, our tables can be modified thanks to different optionals ranging from standard shelf, to inclined shelf, or electrified bar, and so on.

Another important feature is the ease of assembly. This gives us the opportunity to deliver our tables already mounted or unmounted, making transportation easier and less expensive.



## CUSTOMIZATION

The choice of using only bent sheet metal parts, gives us the possibility to offer a completely customizable items (sizes and features).

The side leg can also be customized with your logo. The painting is done with two-tone glossy powder (RAL 5012 and RAL 7035) as standard. Available in other colors on request.





**Tecnolab S.r.l.**  
[www.tecnolab-srl.it](http://www.tecnolab-srl.it)